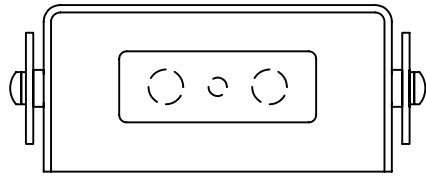
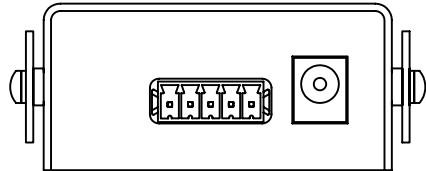


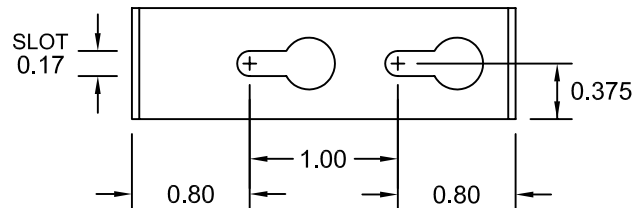
FRONT VIEW



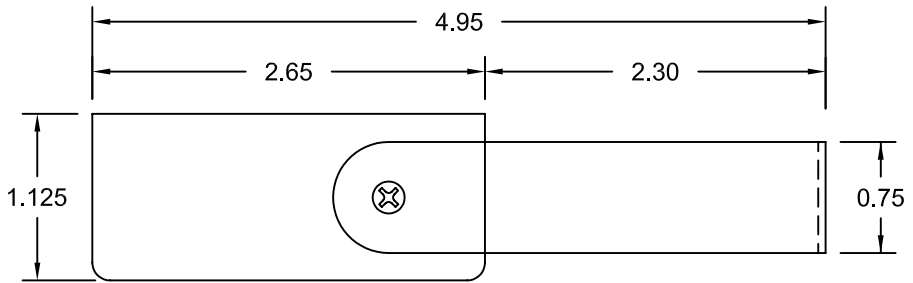
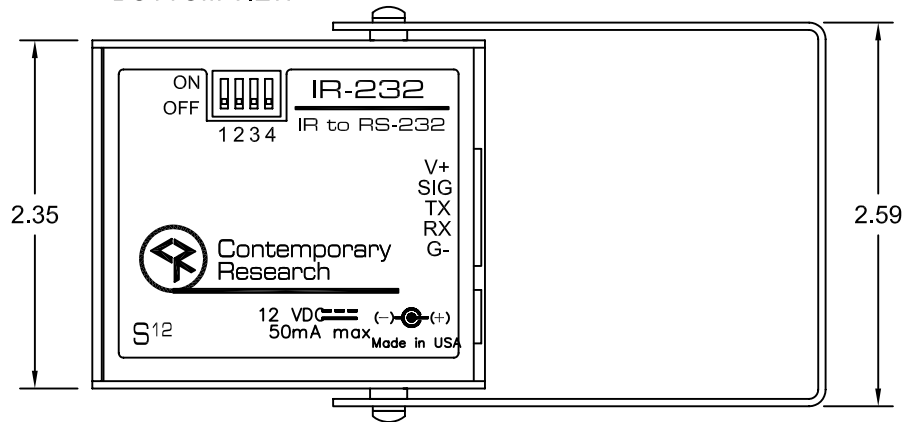
REAR VIEW



BRACKET MOUNT VIEW



BOTTOM VIEW



SIDE VIEW

NOTES

1. BRACKET SWIVEL MOUNTS 360 DEGREES
UNIT CAN MOUNT AT ANY ANGLE TO WALL OR CEILING
2. FRONT HAS 38 AND 56-57 KHZ IR RECEIVERS WITH LED STATUS
ORIENT TO POINT TO WHERE USER WILL OPERATE IR REMOTE
3. REAR HAS 2.1mm POWER JACK AND 3.5mm SCREW TERMINALS
4. BOTTOM HAS 4 POSITION DIP SWITCH

UNLESS OTHERWISE SPECIFIED:

DECIMAL DIMENSIONS INCLUDING HOLES XX ±.010
XXX ±.005
ANGLES ±1°
SURFACE FLATNESS .003 TIR PER LINEAR INCH.
ALL DIMENSIONS IN INCHES.

DO NOT SCALE THIS DRAWING.

SYM	ECO NO.	DESCRIPTION	DATE	APPR.
**** REVISIONS ****				
DRAWN	DATE	<i>Contemporary Research</i> TITLE PRODUCT DRAWING IR-232 IR RECEIVER TO RS-232, SWIVEL MOUNT		
RSH	05/04/04			
CHECKED	DATE	SCALE	DWG. NO.	
APPROVED	DATE	NONE		
RELEASED	DATE	SHT	950-5052	
DIR	FILE	1 OF 1		
		IR-232_PD.DWG		