

IP-232 Ethernet to RS-232

Applications

Boardrooms
Training Centers
Broadcast Testing
Command and Control Centers



Sales Support

Need help finding tuning solution for your application? Our Sales Support staff will be happy to work with you, providing expert integration assistance and a complete systems proposal.

Tech Support

Need tech help? Give us a call. Our tech support staff are experts in the integration industry, so we can research solutions in the proposal stage, advise on programming requirements, and resolve installation issues.

Our job is to make our solutions work seamlessly with your system, performing as promised.

Related Products

AV Tuners
ATSC Tuner
232-Amp Mixer/Amplifier

The IP-232 extends Ethernet control to CR's 232-series TV tuners, video projectors, displays, and other RS-232 controlled equipment. The IP-232 is PoE compliant, accepting power through the LAN in either A or B modes. The unit is fully programmable, and includes switch settings to aid in installation.

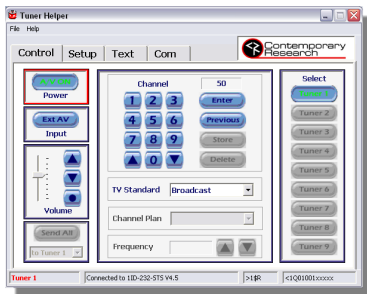
A single IP-232 can control up to nine tuners over Ethernet, with a full 2-way data connection to custom control systems or PC software. CR's Tuner Helper 3, a free Windows application, can connect to the IP-232 for point-and-click Ethernet tuner control and setup.

Features

- Extends RS-232 control over Ethernet
- Controls up to nine CR 232-series tuners or other RS-232 controlled devices
- Powers from Ethernet (PoE) connection in A and B modes
- Integrates any RS-232 controlled device, including video projectors, displays,
- Works with CR's free Tuner Helper 3 software for graphic PC-direct Ethernet tuner control for CR tuners
- Operates with Telnet commands from AMX, Crestron, Simtrol, other control systems, and PC software
- Sets up from IP, RS-232 port, and onboard DIP switches
- Mounts in RK3 AV System Tool Rackmount, or alongside AV tuner in RK-1 or RK-HD1 rack mounts, or surface-mount to CR tuner with SMA Surface Mount brackets
- Includes power supply
- Meets RoHS safety and California energy standards

IP-232 Ethernet to RS-232

Specifications



Tuner Helper 3

Feature	
Physical	5.5" [140mm] wide x 1.1" [28mm] height x 3.5" [86mm] deep 8 oz [226g] Rack-mount with other AV Tools in RK3 rack kit Mount alongside tuner in RK-1 or RK-HD1 rack kit RoHS compliant and energy-efficiency meets new California standards
Connections	
RS-232	Connector: DB-9 male, 300 to 19,200 baud (9600 default) LEDs: Tx (Red), Rx (Yellow)
Ethernet	10/100baseT RJ-45 jack, RX/TX LEDs indicate Ethernet data send and receive Power over Ethernet (PoE) compatible, in A and B modes
Setup	DIP switch on bottom of case for in-field setup Programmable via RS-232 port or remote setup vis Ethernet
Power	2.1mm coaxial jack (inside center conductor positive) 150 mA maximum, 11.5 to 15 VDC, 12 VDC typical
Includes	Switching power supply, 500 mA 12 VDC
Options	Tuner Helper 3 Software RK-HD1 Single Rack Kit (for 232-ATSC tuner) RK-1 Dual Rack Kit (for 232-STC, STA, MTA tuners) SMA Surface Mount for AV Tools (mounts IP-232 to CR tuner or flat surface) CC-232 RS-232 Cable

Warranty

All CR products feature a full two-year warranty.

